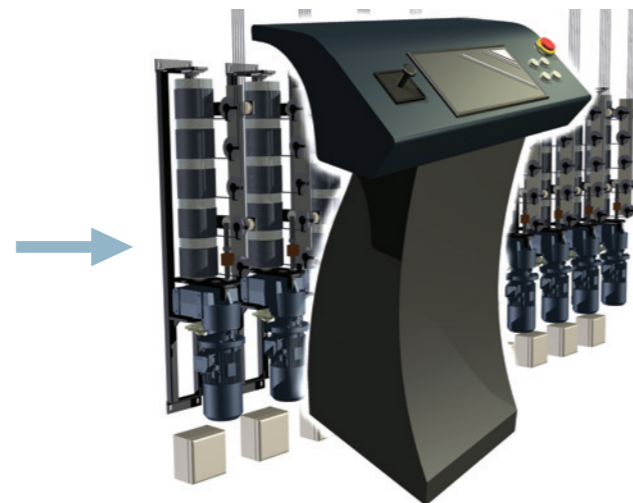


Artisan Power Flying System



System Specification:

Maximum number of hoists = 75

Maximum number of shows = 12

Maximum number of groups per show = 20

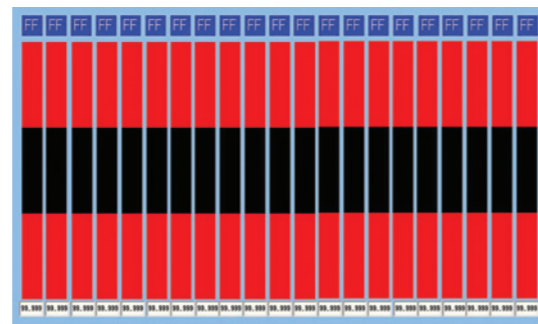
Maximum number of recorded positions per hoist = 9

Maximum number of cues per show = 500 including decimal increments

Variable speed control by touch screen and joystick

Cue action by touchscreen pushbuttons or joystick

Screen sizes are 10, 12, 15 or 17 inch as required



Operation is via easy-to use touch screens for show/group/hoist/cue/speed selection system status and set-up.

Start Screen:

Displays show numbers and titles plus screen selection buttons.

Group Record Screen:

Hoist position and hoist groups can be recorded as required.

Cue Record Screen:

Records group numbers, hoist positions and hoist speed against dedicated cue numbers.

Bargraph Position Screen:

Shows hoist position plus software limits.

Edit Screens:

Touch screen QWERTY keyboard for Show/Group/Cue description.

Fault Screen:

Shows drive, hoist sensor information and individual emergency stop status.

CENTRE STAGE
ENGINEERING

Unit 4 Highland Close
St. Helens Way
Fison Way Industrial Estate
Thetford
Norfolk IP24 1HG



Tel: 0844 499 6250
+44 1842 821210
Fax: 0844 499 6252
info@centre-stage.co.uk
www.centre-stage.co.uk

Artisan Power Flying System



CENTRE STAGE
ENGINEERING

www.centre-stage.co.uk

The Artisan Power Flying System is an economic solution to the problem of replacing old or redundant counterweight flying with a modern power flying system.



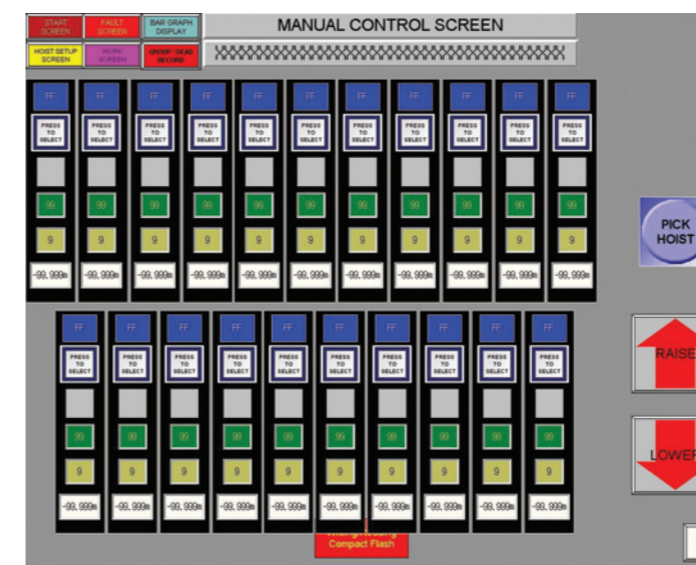
Its ease of use, flexibility and competitive pricing structure provide an attractive alternative to the installation of a new counterweight flying system that may well be made redundant by future health and safety legislation.

Artisan is a complete, tried and tested system, built with proprietary components and incorporating Omron Drive and PLC technology.

- Portable Desk or Wall Mounted Control Panel, supplied with a high resolution touch screen (10" to 17") and joystick and/or pushbutton controls
- Screen Editing via touch screen QWERTY keyboard
- Operating Manual on Help Screens
- Show Storage via USB Memory Sticks
- Inverter or Servo Drive Control
- Hand-held pendant controller with colour touch screen
- Optional radio controlled pendant
- Optional Radio Frequency ID Card System for controlled operator access
- Motor Drive and Control Cabinets
- Remote Control Fault Diagnosis and software upgrades via broadband WAN network

Artisan can control the following motorised hoists that are supplied by Centre Stage Engineering:

- Zero Fleet Angle Hoists with AC induction Motors
- Zero Fleet Angle Hoists with Servo Motors
- Self-Sustaining Pile Wind Hoists
- Tri-Band Hoists
- Tri-Point Point Hoists

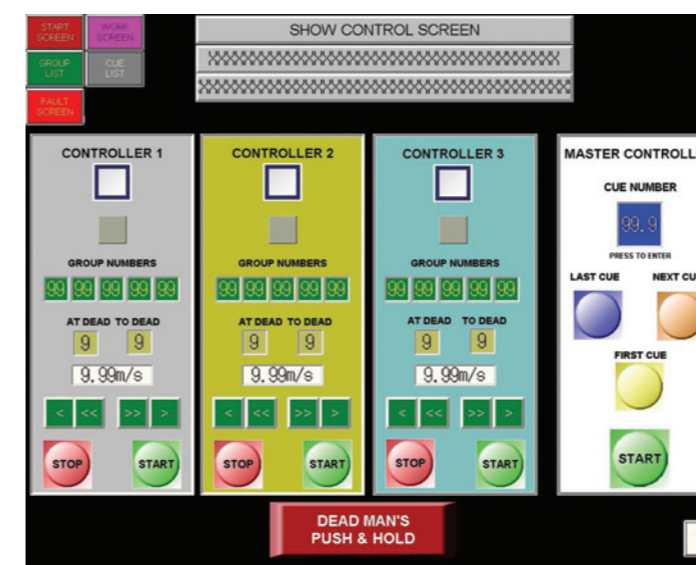
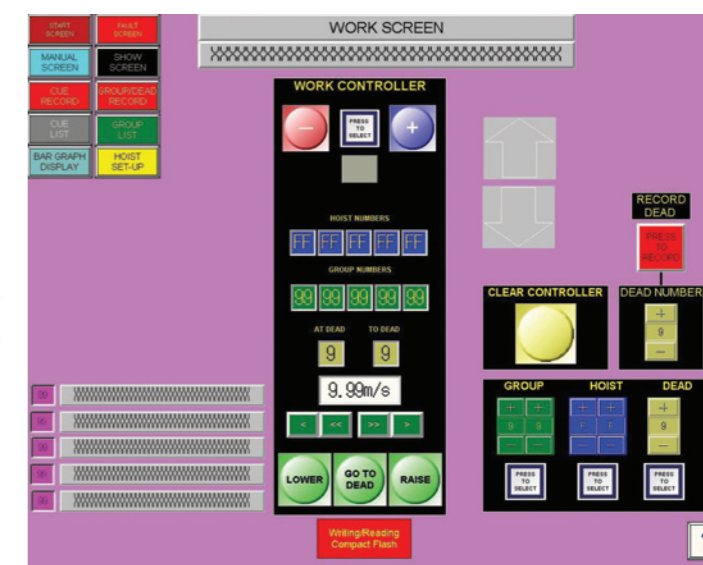


Manual Screen

For selection and control of individual hoists at fixed speeds. The Pick function permits individual operation of a "grouped" hoist. Position, Group and Dead number displayed for each hoist.

Work Screen

The Work Controller is used in a non-show situation to run hoists or groups of hoists at set speeds either manually or to pre-recorded positions.



Show Screen

A Master Controller and 3 Slave Controllers provide cue control in a show situation. Cue number follow-on and individual controller stop start facility provide maximum operational flexibility.